



AMPHI
INTERNATIONAL



LIFE Auenamphibien (LIFE14NAT/DE/000171)

LIFE floodplain ponds amphibians.

21.7.2016

Amphi International by Lars Briggs, International Science Park Odense, Forskerparken 10, DK-5230 Odense M

Contents:

- General information
- Situation of the main target species ***Bombina bombina*** and *Triturus cristatus*, *Hyla arborea*, *Pelobates fuscus*
- C-actions of the project
- Practical example – „Banker See“

Key data

Coordinating beneficiary: NABU Deutschland, Landesverband Niedersachsen e.V

Partners: Biosphärenreservat Niedersächsische Elbtalaue
Amphi International

Duration: 01.01.2016 bis 31.12.2023

Budget: 3,5 Millionen Euro

Species:

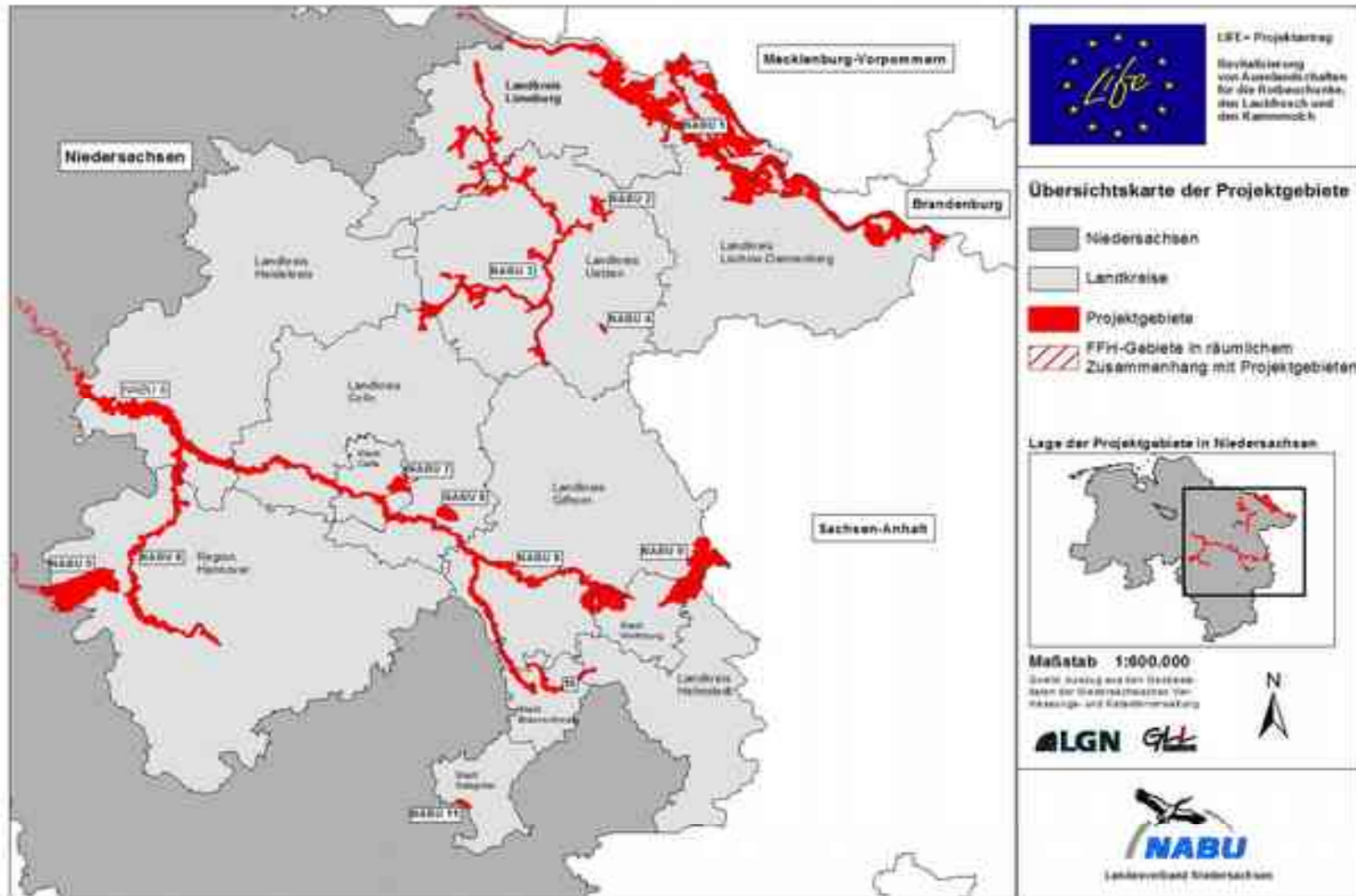
Bombina bombina

Triturus cristatus

Hyla arborea



Project sites: 11 sites in north-east Niedersachsen



Key measures

- Creation and restoration of 301 ponds.
- Habitat and population management(supportive breeding) of 5 populations of *Bombina bombina* (ELBE MAB river area)
- Pond digging for Hyla, Triturus in other river valleys.
- Evaluation of habitat for *Bombina bombina* and reintroduction on best potential sites in other River valleys
- Establishing favourable conditions by extensive grazing.



Distribution & Situation of *Bombina bombina*



Distribution of *Bombina bombina*

AMPHI work with this species on the border of its range systematically securing all the small isolated populations:

1999-03: LIFE in Denmark

2004-2009: Germany state Schleswig-Holstein
Sweden and Latvia.

2016-24: Germany state: Niedersachsen

Experiences from more central range:
How does the perfect habitat look under perfect climatic conditions:

2004-08: LIFE Poland/Lithuania

2010-14: LIFE Poland

Amphibian decline in Niedersachsen:

Hyla arborea: Strong decline state wide

Pelobates fuscus: Strong decline state wide

as both species are connected to agriculture landscapes

Triturus cristatus: moderate decline as the species are connected to forested landscapes

C-Actions: Creation of ponds

Loss of breeding ponds over 90% during the last decades



Creation of new breeding habitats in all 11 project areas in NABU 1 (Biosphere reserve Niedersächsische Elbtalaue appr. 100 new breeding ponds), example Banker See before (2012) left, after (2016)



C-Actions - Population management

- 1) Where no *Bombina orientalis* exists anymore (reintroduction)
- 2) Where *Bombina orientalis* is threatened (supportive rearing)

1. Step: Genetic analysis



2. Step: Collecting eggs



3. Step: Rearing



4. Step: Release of metamorphs



C-Actions - Establishing of grazing



Perspectives
Habitats created in LIFE
on former fields.



Thank you for your attention!



AMPHI
INTERNATIONAL

